

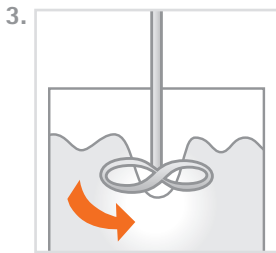
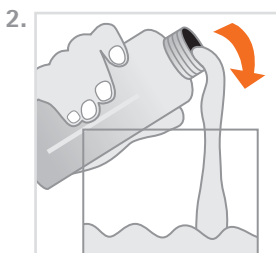
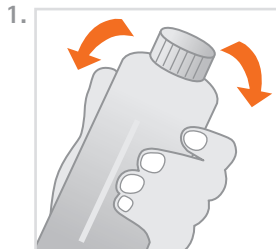
printo[®]dent[®] Generative Resin GR-13.3 model release

pro3d[®]ure
medical

pro3dure medical GmbH

Am Burgberg 13
D - 58642 Iserlohn
Tel. +49 (0)2374 920050-0
Fax +49 (0)2374 920050-50
info@pro3dure.com
www.pro3dure.com

Instructions



1. Product description

pro3dure's generative resin **printo[®]dent[®] GR-13.3 model release** is a resin for the production of dental models with integrated separation effect based on an image projection system (≤ 405 nm). The formulation of **printo[®]dent[®] GR-13.3 model release** is optimized for the requirements of a robust production guaranteeing constant high quality. The material can be used for build processes with layer thicknesses from 50 up to 100 μm . It is recommended to use the pro3dure medical curing device **CD-2** for post curing.

2. Processing

- **printo[®]dent[®] GR-13.3 model release** bottles should be well shaken before use (fig. 1).
- Make sure that **printo[®]dent[®] GR-13.3 model release** material is temperature adjusted up to 23 °C to 30 °C.
- Carefully pour **printo[®]dent[®] GR-13.3 model release** into the vat of the image projection-unit (fig. 2).
- Bubbles can be removed with a cleaned spatula or by a recoater routine.
- For the machine parameter adjustment please refer to the Technical Data Sheet.
- After the build process is finished a direct post treatment is recommended. If this cannot be guaranteed leave the produced objects in the liquid **printo[®]dent[®] GR-13.3 model release** resin.
- After cleaning of the parts with isopropanol ≥ 97 % (approx. 30 sec. in an ultrasonic bath) the objects are postcured in an adequate light curing unit (e.g. pro3dure's **CD-2** for a period of 3 min.) in a protective gas atmosphere.
- Dental models generated out of the generative resin **printo[®]dent[®] GR-13.3 model release** can be directly used in combination with 2-component powder/liquid resins without separating agents.
- Impurities due to operation mistakes cannot be excluded. With respect to the low viscosity of the resin it is possible to filtrate the **printo[®]dent[®] GR-13.3 model release**. It is recommended to filtrate and stir up the resin on a regular base (fig. 3). To avoid bubbles let **printo[®]dent[®] GR-13.3 model release** rest for 30 min. before usage.

Contains: Urethane dimethacrylates, initiators, dyes, stabilisers.

3. Important

- To avoid detrimental effects on material quality do not expose the liquid material to irradiation under any circumstances.
- Deviations from the described manufacturing process may lead to different mechanical and optical properties of the **printo[®]dent[®] GR-13.3 model release** material.
- Ensure personal protective gear during processing.
- Caution: Polymerised resins are chemically resistant. Avoid stains on clothing!
- Avoid any contact with skin and eyes. In case of accidental contact, rinse with adequate running water, consulting a doctor if necessary.
- The lot number and the best before date are indicated on each **printo[®]dent[®] GR-13.3 model release** packaging. In case of claims please always indicate the lot number of the product. Do not use the product after expiry of the best before date.

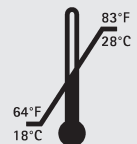
Safety advice

pro3dure medical GmbH is not liable for any damages caused by improper application of the material. To be used by trained specialist personnel for the purpose indicated only.

Product description:
photopolymerizable resin for production of dental models

Technical data:

- Density: ca. 1.1 g/ml
- Viscosity: ca. 0,2 Pa s
- Post cured material: (depends on postcuring unit)
Colour: white opaque
Ultimate flexural strength: ca. 15 MPa** (ISO 20795-1)
Flexural modulus: ca. 400 MPa** (ISO 20795-1)
Flexural strain (at break): ca. 20 %** (ISO 20795-1)
Bond strength to 2-component powder/liquid resins: < 15 N** (ISO 22112)
Hardness: ca. 65 Shore D
- Storage:



Ordering information:

Standard packing:
1 kg bottle,
white opaque
item no.: D1000372

* These data result from measurements of a representative sample, which were determined within the scope of our quality assurance.

** on the basis

idea to product.